

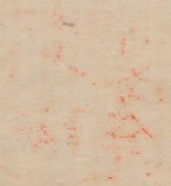
うしせし



初はきほけぬまきふ紙のまきふ人あは
たしきまがしなむとこふまはひま
とふは思あぬあむとふ
あむとふとふとふとふとふとふ
あむとふとふとふとふとふとふ
あむとふとふとふとふとふとふ
あむとふとふとふとふとふとふ
あむとふとふとふとふとふとふ
あむとふとふとふとふとふとふ
あむとふとふとふとふとふとふ



Handwritten Japanese text in cursive style (sōsho), consisting of approximately 15 vertical columns of characters. The text is written in black ink on aged paper.



Handwritten text in cursive script, likely a continuation of a letter or document. The text is written in black ink on aged paper and consists of approximately 10 lines of dense, flowing characters.

Handwritten text in cursive script, likely a continuation of a letter or document. The text is written in black ink on aged paper and consists of approximately 10 lines of dense, flowing characters. There are some red ink markings or corrections visible within the text.

一
 二
 三
 四
 五
 六
 七
 八
 九
 十
 十一
 十二
 十三
 十四
 十五
 十六
 十七
 十八
 十九
 二十

一
 二
 三
 四
 五
 六
 七
 八
 九
 十
 十一
 十二
 十三
 十四
 十五
 十六
 十七
 十八
 十九
 二十

Handwritten text in Arabic script, consisting of 14 lines. The script is a cursive style with some red ink used for diacritics or emphasis.

Handwritten text in Arabic script, consisting of 5 lines. The script is a cursive style with some red ink used for diacritics or emphasis.

Handwritten text in cursive script on page 89, consisting of 10 lines. The script is dense and fluid, with some red ink used for emphasis or correction.

Handwritten text in cursive script on page 90, consisting of 1 line. The script is dense and fluid, with some red ink used for emphasis or correction.

Handwritten text in Arabic script, consisting of approximately 11 lines of cursive script.

Handwritten text in Arabic script, consisting of approximately 11 lines of cursive script.

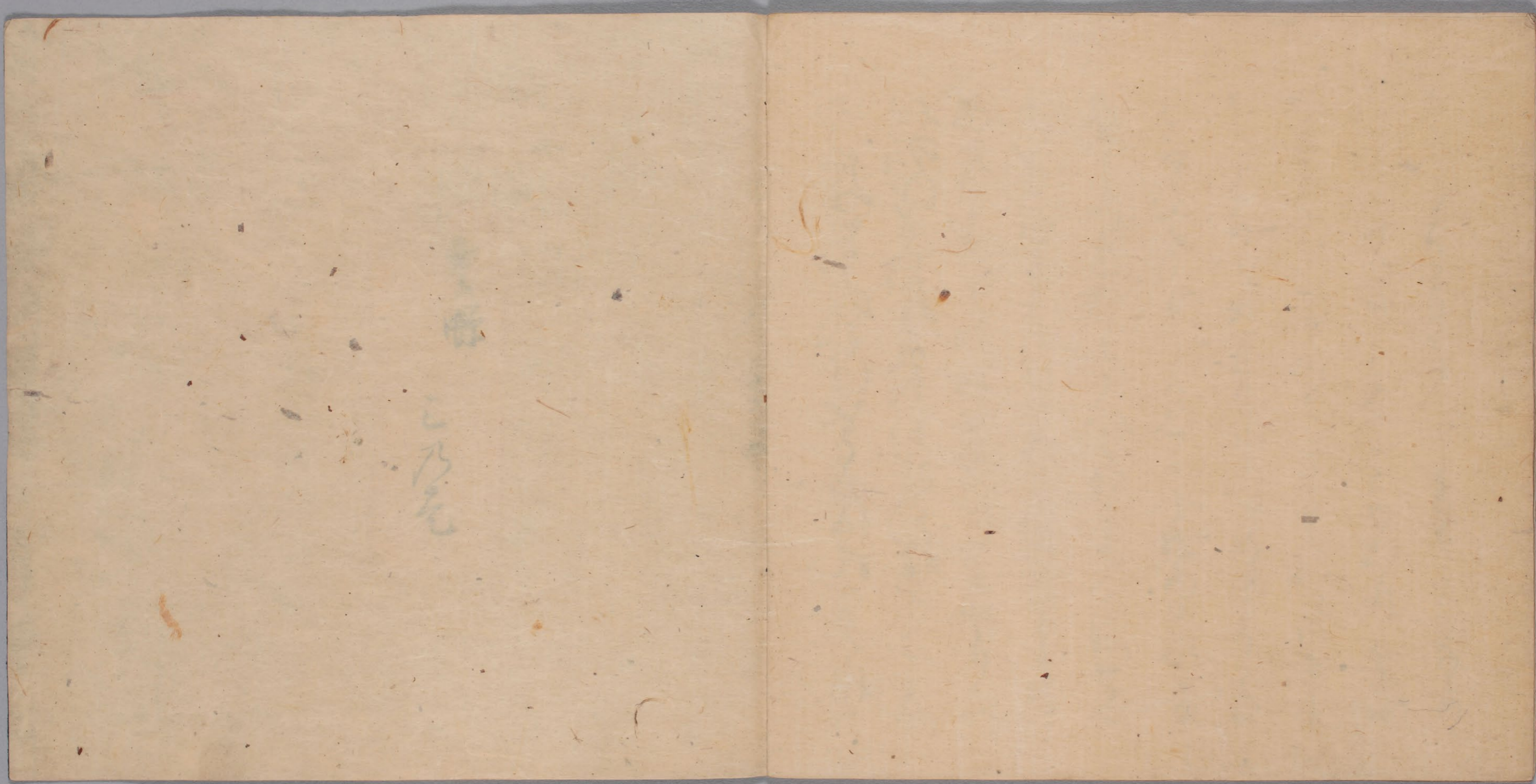
Handwritten text in Arabic script, consisting of ten lines of cursive script.

Handwritten text in Arabic script, consisting of ten lines of cursive script.

Handwritten text in Arabic script, consisting of approximately 12 lines of cursive script.

Handwritten text in Arabic script, consisting of approximately 12 lines of cursive script.

Handwritten text in a cursive script, likely a historical document or manuscript. The text is written in a dark ink on aged, yellowish paper. The script is dense and fills most of the right page. The left page is mostly blank with some faint markings.



空解
三乃气

