



卯月
廿一日





Handwritten text in cursive Japanese calligraphy (sōsho) on the left page of an open book. The text is arranged in approximately 12 vertical columns, reading from right to left. The ink is dark and the paper shows signs of age and wear.



Handwritten text in cursive script, likely a list or index, consisting of approximately 12 lines of entries.

Handwritten text in cursive script, continuing the list or index from the previous page, consisting of approximately 12 lines of entries.

Handwritten text in Arabic script, consisting of 11 lines of cursive script.

Handwritten text in Arabic script, consisting of 7 lines of cursive script.

Handwritten text in Arabic script, consisting of approximately 12 lines of cursive script.

Handwritten text in Arabic script, consisting of approximately 12 lines of cursive script.

Handwritten text in Arabic script, consisting of approximately 12 lines of cursive script.

Handwritten text in Arabic script, consisting of approximately 12 lines of cursive script.

Handwritten text in Arabic script, consisting of approximately 11 lines of cursive script.

Handwritten text in Arabic script, consisting of approximately 11 lines of cursive script.

Handwritten text in Arabic script, consisting of approximately 12 lines of cursive script.

Handwritten text in Arabic script, consisting of approximately 12 lines of cursive script.

Handwritten text in Arabic script, consisting of 11 lines of cursive script.

Handwritten text in Arabic script, consisting of 11 lines of cursive script.

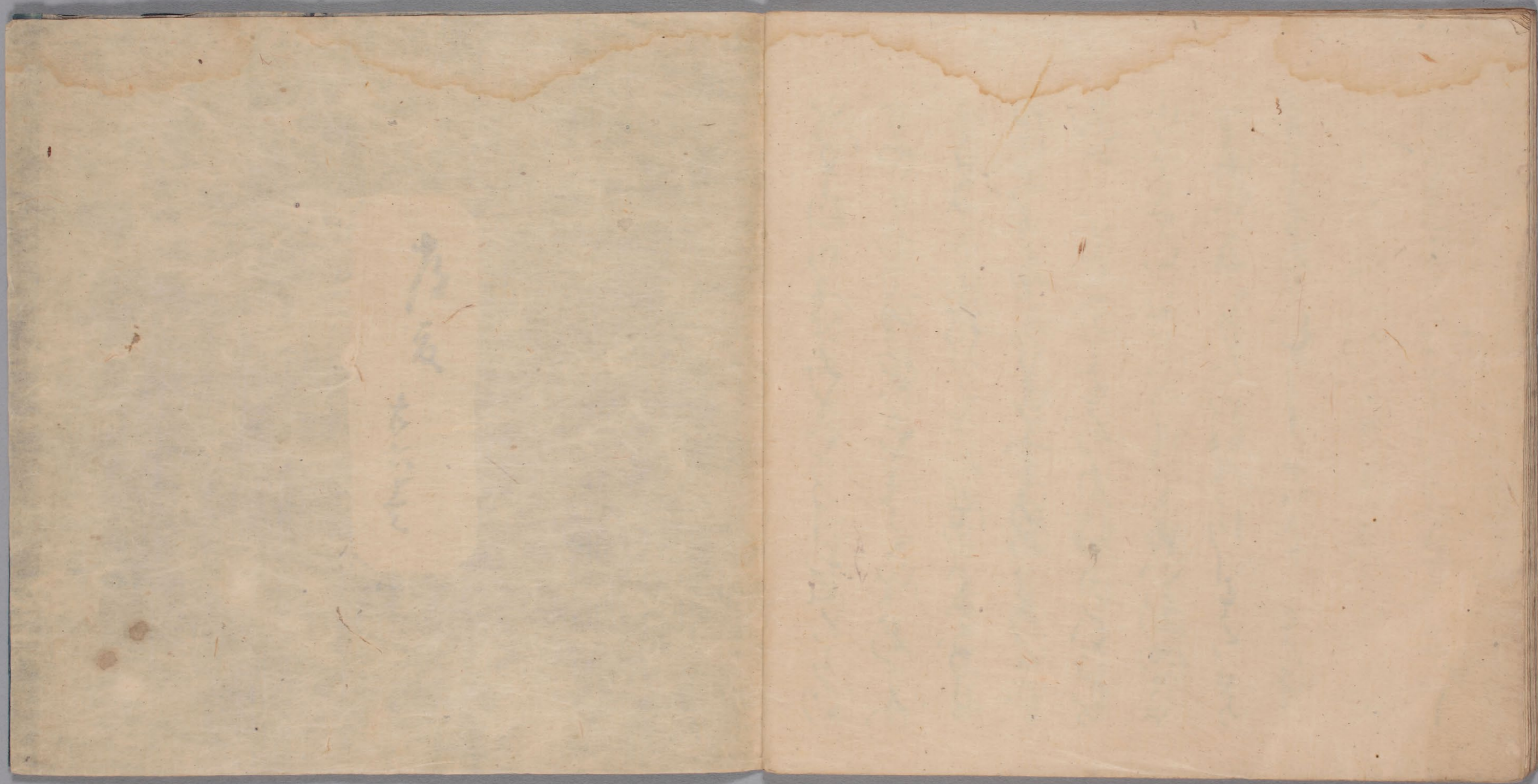
Handwritten text in Arabic script, consisting of approximately 12 lines of cursive script.

Handwritten text in Arabic script, consisting of approximately 12 lines of cursive script.

Handwritten text in Arabic script, consisting of approximately 10 lines of cursive script.

Handwritten text in Arabic script, consisting of approximately 10 lines of cursive script.

Handwritten text in a cursive script, likely a historical document or manuscript. The text is written in dark ink on aged, yellowed paper. The script is dense and fills most of the page. The text is written in a cursive script, likely a historical document or manuscript. The text is written in dark ink on aged, yellowed paper. The script is dense and fills most of the page.



古
夏
古
六
七

